



MOUNT ST. JOSEPH
UNIVERSITY®

SETON

RESIDENCE LIFE

2026-2027

CAMPUS LIVING

BENEFITS

- Free parking.
- Free laundry (students must provide their own detergent and fabric softener).
- Student ID access for dining services, library, and copy/printer machines.
- Lounges on every floor include kitchenettes with microwaves, flat-screen TVs, and Blu-ray players.
- High-speed wireless Internet accessible throughout the residence hall and MSJ campus.
- 24/7 Campus Police Service.
- Game room, open 24/7, offering a pool table, foosball, air hockey, table tennis, and flat-screen TV.
- Fifth Third Bank ATM located in Seton lobby.

DINING

Multiple dining options are available to students living on campus:

- Fifth Third Bank Dining Hall | Seton Center
- Joe Lion's Grille | Harrington Center
- AVI "We proudly serve Starbucks" | Library
- Market C (24/7 convenience store, not on meal plan) | Seton Center

BOARD

	Year	Semester
Gold: 20 meal plan + \$250 flex	\$6,450	\$3,225
Blue: 15 meal plan + \$150 flex	\$6,220	\$3,110
*Joe's Way: 10 meal plan + \$150 flex	\$5,850	\$2,925

For the most current meal plan rates, visit www.msj.edu/residence-life

**Available to juniors, seniors, and graduate students living in the residence hall only.*

All tuition, fees and room/board are subject to change by the Mount St. Joseph University Board of Trustees. Visit www.msj.edu/financial-aid for more information.



RESIDENT ASSISTANTS

Resident Assistants (RAs) are the lifeline to the University for students living on campus. These staff members are knowledgeable about campus resources and offerings. RAs help students focus on their studies, identify resources on campus, meet new people, get involved, and have fun.

GET INVOLVED

Living in the residence hall gives you a unique opportunity to connect with other Mount Students while living and learning together. As a residence hall student, you will have many opportunities to engage in The Mount community. Getting involved allows you to make new friends, develop leadership skills, and engage with the entire campus community. Getting involved in the residence hall also has a major impact on your personal and academic success!

Discover engaging ways to participate in the residence hall community:

Attend Residence Hall Programs: Explore numerous opportunities for fun, social, and educational programs orchestrated by Resident Assistants (RAs) to enhance the resident experience.



Residence Hall Council (RHC): Join this student-run organization dedicated to advocating for resident interests. RHC provides avenues for personal growth and leadership development, offering members opportunities to serve in prominent roles and organize large-scale programs, such as Mount Bingo.

Resident Assistant (RA): RAs are undergraduate student staff residing in the hall, and play a pivotal role in supporting academic success, social development, and personal growth. They help direct students to campus resources, create programs, help students get involved, enforce policies, and serve as valuable resources to all residents.

COMMUNITY LIVING CONNECTIONS

Living on campus offers a myriad of benefits for college students, as supported by research and specific features of the Seton Residence Hall:

Academic Success: Higher rates of retention, persistence, and degree attainment. Higher grade point averages are observed among on-campus residents.

Professional Development: Increased participation in co-curricular activities enhances marketability to employers. Interaction with faculty and peers is more extensive, promoting professional growth.

Satisfaction and Relationship Building: Higher overall satisfaction with the college experience. On-campus living facilitates easy friendship-building with a diverse group of students.

Student Mentorship: Resident Assistants (RA's) support students by providing knowledge of campus resources. RA's guide students in resource identification, networking, leadership development, and academic focus.

Learning-Focused Environment: Seton Residence Hall encourages academic improvement through study groups and access to the Learning Center.

Proximity and Convenience: Seton Residence Hall's location within a 5-minute walk to classes and campus resources. Elimination of daily commuting allows for more time dedicated to studying, relationships, and personal activities.

Independence: Living on campus provides an environment for students to learn independence in managing schedules, academics, finances, relationships, and well-being.

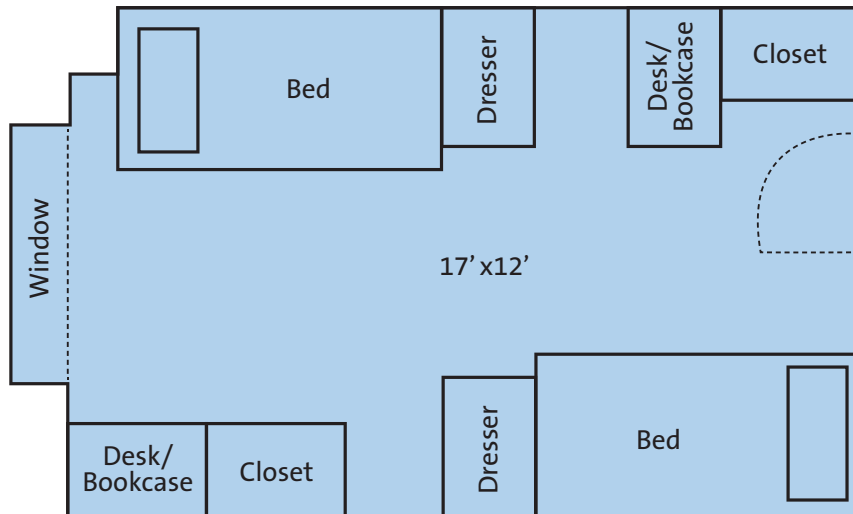
Security: 24-hour service by Campus Police ensures residents' safety. Services include escort service, vehicle assistance, first aid, and crime prevention programs.

Access to Resources: On-campus resources like workout facilities, computer labs, study spaces, counseling services, peer tutoring, library, academic advising, and the Career and Experiential Education Center are easily accessible.

City Engagement: The Mount's proximity to Cincinnati (15 minutes away) allows students to participate in various city events and activities, enhancing their overall college experience.

SETON WEST

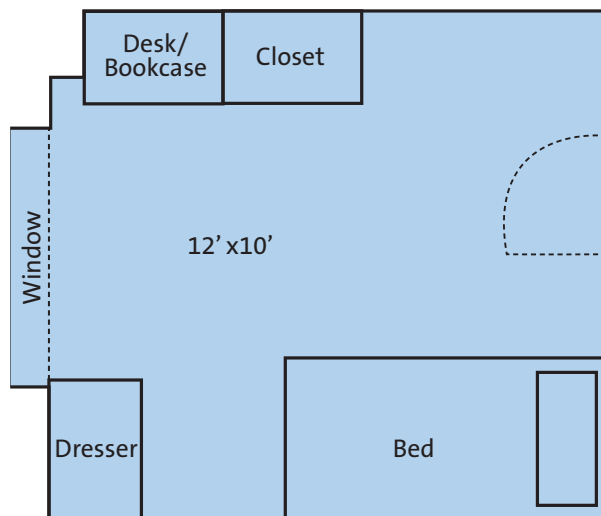
Rooms include a wardrobe closet, twin bed, bookcase, dresser, and desk with chair for each student. Furniture can be configured in many different ways. Seton West rooms include individually controlled air-conditioning units and central heating. Window blinds are provided.



DOUBLE ROOM

2026-27 Rate: \$3,150/semester

- Space: 17' x 12'
- Mattress: 39" x 80" (extra-long twin)
- Desk: 3' x 2' (with chair)
- Wardrobe closet: 3' x 2'
- Dresser: 2' x 3'
- Bookcase: 29" x 34"



SINGLE ROOM

2026-27 Rate: \$4,010/semester

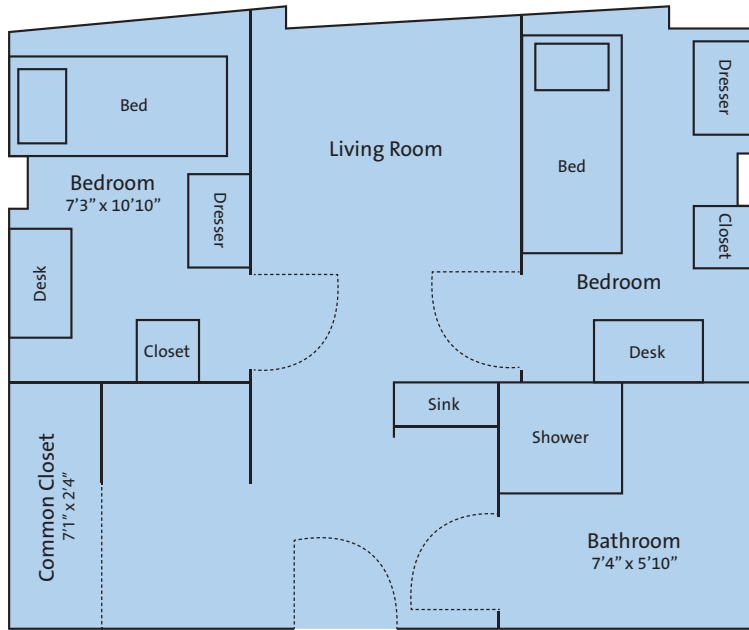
- Space: 12' x 10'
- Mattress: 39" x 80" (extra-long twin)
- Desk: 3' x 2' (with chair)
- Wardrobe closet: 3' x 2'
- Dresser: 2' x 3'
- Bookcase: 29" x 34"

Furniture dimensions are not to scale. Rooming options listed are not all-inclusive.

For the most current room rates or more information, visit www.msj.edu/student-life/residence-life.

SETON CENTER

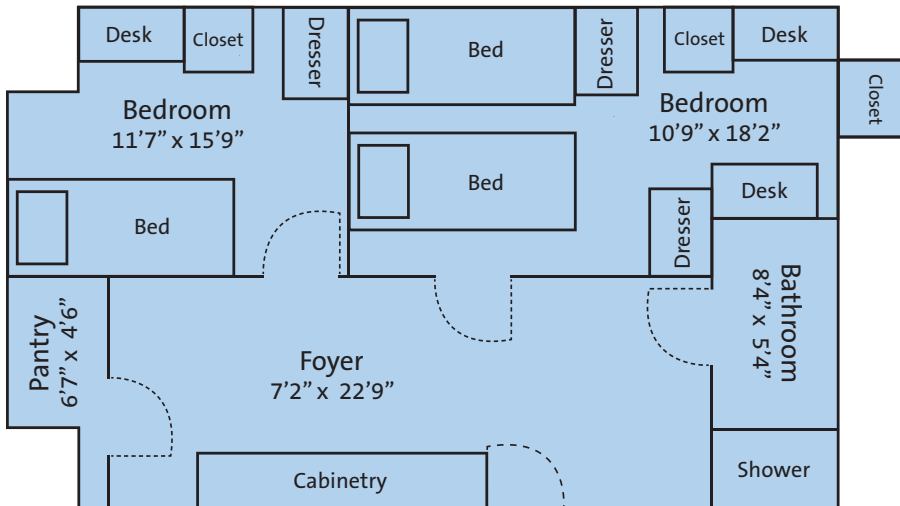
Suites for two and three residents feature a bathroom, common living room, and individual bedrooms. Furniture can be configured in many different ways. Window blinds are provided. Central heating and cooling system also provided. We do offer handicap accessible rooms upon request in the housing contract process with Residence Life.



DOUBLE SUITE

2026-27 Rate: \$4,440/semester

- Common living room: 8'5" x 10'10"
- Two bedrooms: 7'3" x 10'10" each
- Private bathroom: 7'4" x 5'10"
- Mattress: 39" x 80" (extra-long twin)
- Small refrigerator nook: 38 1/2' x 29 1/2' x 31 1/2'
- Desk: 3.5' x 2' (with chair)
- Wardrobe closet: 2' x 2'
- Dresser: 2' x 3'
- Built-in common closet: 7'1" x 2'4"
- Loft-able beds



TRIPLE SUITE

2026-27 Rate: \$4,440/semester

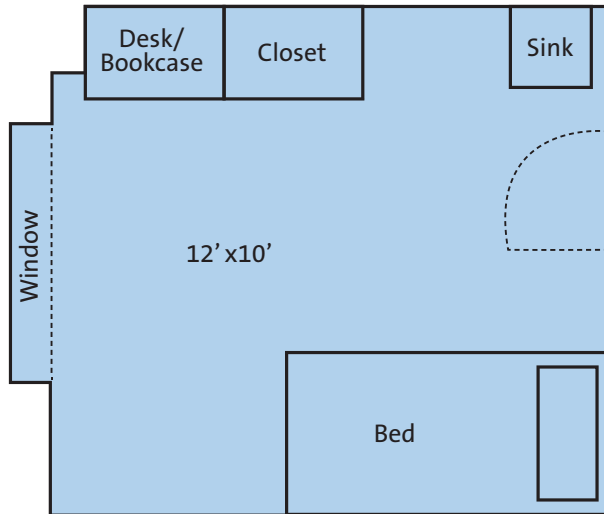
- Two Bedrooms: 11'7" x 15'9" and 10'9" x 18'2"
- Private Bathroom: 8'4" x 5'4"
- Mattress: 39" x 80" (extra-long twin)
- Desk: 3.5' x 2' (with chair)
- Wardrobe closet: 2' x 2'
- Dresser: 2' x 3'
- Built-in common closet: 6'7" x 4'6"
- Loft-able beds
- Handicap accessible

Furniture dimensions are not to scale. Rooming options listed are not all-inclusive.

For the most current room rates or more information, visit www.msj.edu/student-life/residence-life.

SETON EAST

Rooms include a wardrobe closet with drawers, twin bed, and desk with chair. Seton East rooms include individually controlled air-conditioning units and central heating. Window blinds are provided. Sinks are available in select rooms.



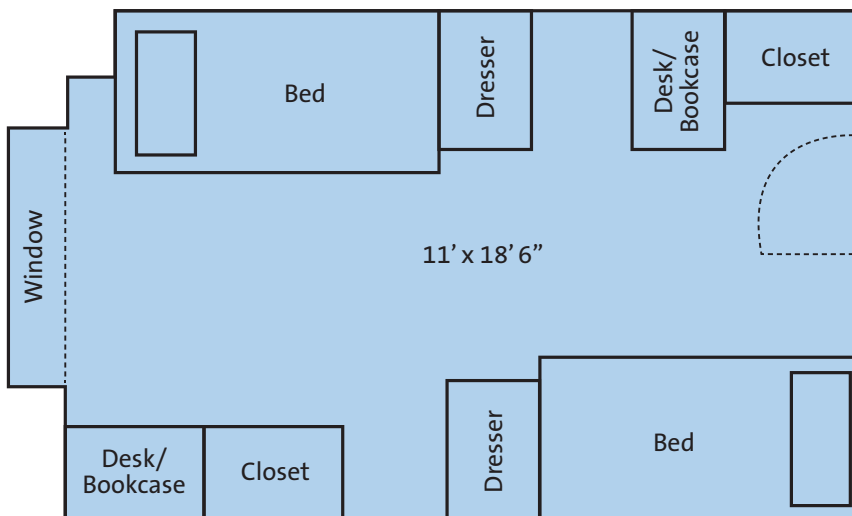
SINGLE ROOM

2026-27 Rate: \$3,665/semester

- Space: 12' x 10'
- Mattress: 39" x 75" (standard twin)
- Desk: 3' x 2' (with chair)

SETON SOUTHEAST

Rooms include a wardrobe closet, twin bed, bookcase, dresser, and desk with chair for each student. Furniture can be configured in many different ways. Seton Southeast rooms include individually controlled air-conditioning units and central heating. Window blinds provided.



DOUBLE ROOM

2026-27 Rate: \$3,150/semester

- Space: 11' x 18' 6"
- Mattress: 39" x 80" (extra long twin)
- Desk: 3' x 2' (with chair)
- Wardrobe closet: 3' x 2'
- Dresser: 2' x 3'
- Bookcase: 29" x 34"

Furniture dimensions are not to scale. Rooming options listed are not all-inclusive. For the most current room rates or more information, visit www.msj.edu/student-life/residence-life.



ON-CAMPUS HOUSING SHOPPING LIST

- Alarm clock
- Bath towels
- Bedding (sheets, comforter, pillow, pillow cases)
- Cleaning supplies
- Clothes hangers
- Deodorizer spray
- Desk lamp
- Ethernet and/or HDMI cable
- Fan
- First-aid kit w/thermometer
- Laundry supplies (hamper, basket, detergent, etc.)
- Mattress topper/pad
- Phone charger with extra cables
- Removable 3M strips/hooks
- Reusable food containers, utensils, water bottle
- Reusable grocery bags
- Sewing kit
- Shower shoes and caddy
- Small vacuum
- Storage containers-under bed and stackable
- Surge strips with circuit breaker (NOT extension cords)
- Toilet paper (if in suite or single with bath)
- Tool kit
- Trash bags and waste basket

ITEMS TO COORDINATE WITH YOUR ROOMMATE(S)

- TV
- Keurig/Coffee maker with automatic shut-off
- Small refrigerator (4.1 cubic foot or smaller)

COLLEGE SUPPLY SHOPPING LIST

- Backpack
- Calculator
- Debit/credit card
- Extra batteries
- Folders, binders, notebooks
- Headphones
- Laptop
- Pens, pencils, erasers, paper clips
- Ruler
- Scissors
- Stamps
- Stapler
- Study supplies
- Umbrella
- USB flash drive
- Wall calendar

ITEMS NOT PERMITTED IN ROOM

- X** Any cooking device with a heated surface such as a hot plate, electric grill, or toaster (exception: coffee maker with automatic shut-off)
- X** Air Fryers
- X** Candles, incense, or anything similar
- X** Halogen lamps
- X** Hoverboards
- X** Microwaves
- X** Space Heater
- X** Extension cords and power strips that are not surge protected
- X** LED strip lighting
- X** Pets



CONTACT US

Call the Office of Residence Life at 513-244-4304, email us at residence.life@msj.edu or go online for more information at www.msj.edu/student-life/residence-life.

RESIDENCE LIFE POLICY

University policy states that all single, full-time, undergraduate students under the age of 21 or having fewer than 59 credit hours completed prior to the first day of class of any given semester, are required to live on campus and participate in a meal program offered by the University. Exception is made for students residing with their parents/legal guardian in the parent's/legal guardian's principal residence within a 35-mile driving distance of the University campus. Students living off campus who fail to meet these requirements will be assessed the lowest room and board rates for that semester.



MOUNT ST. JOSEPH UNIVERSITY®

Office of Admission
5701 Delhi Road
Cincinnati, Ohio 45233-1670
513-244-4531 | 800-654-9314
www.msj.edu/apply
admission@msj.edu

FOLLOW US ON SOCIAL:



@MountStJosephU
@MSJ.Admission



@MountStJosephU
@MSJ_Admissions



@MountStJosephU
@MSJ_Admissions



@MountStJosephU